

KNYPERSLEY FIRST SCHOOL



WELCOME TO YEAR 4

2026





WHAT WE'LL DISCUSS TODAY



- School website
- Calendar Dates and Support
- Communication
- Attendance
- Behaviour Policy and Rewards
- SEND support
- Year Group Specific Overview
- Weekly Timetable
- PTFA



CHILDREN FIRST LEARNING PARTNERSHIP



<https://cflptrust.co.uk/>



What It Means to Be Part of The Children First Learning Partnership

Being part of a trust means your child benefits from a strong network of schools working together to give every child the very best start.



Working Together for Your Child

- Shared expertise and high-quality training for staff
- Consistent, research-informed approaches
- High expectations for every child



More Opportunities for Children

- Shared events and enrichment activities
- Enhanced support for SEND and wellbeing
- Investment in high-quality resources



Stronger Support for Learning

- Broad, ambitious curriculum
- Continuous professional development for staff
- Targeted support for SEND, SEMH & Pupil Premium



What This Means for You as Parents

- A secure, stable organisation
- Putting children first in every decision
- Clear communication and safeguarding

Together, we are bigger, stronger, and working to **help every child thrive.**

The Children First Learning Partnership

Putting Children First

SCHOOL WEBSITE

<http://knypersley.staffs.sch.uk/>

Policies

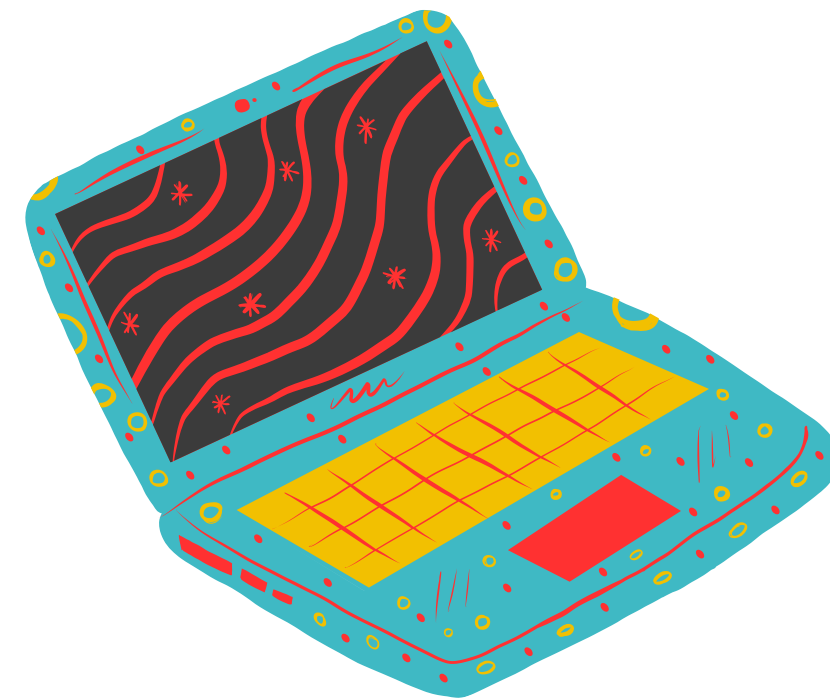


Newsletter – Online/ via Arbor (paper copies available via the school office).

Safeguarding page

PTFA information

School Calendar



Everything you need to know is on our website!



CALENDAR DATES



In September we will share 'Important Dates for Parents' overview this document captures all key dates that we have planned into the diary already to help you prepare for the year ahead. We will also share a Non-uniform overview that can be used to again aid your calendar and organisation.

Currently on the school website under calendar there are the school dates to aid you in your holiday booking and child care needs. Please pay close attention to inset days as they have been adjusted this year.

We do use Facebook, Arbor and the newsletter as reminders and to indicate any changes but please ensure you add the information as it is given as to not rely on reminders and to aid organisation and timeframes.

Please share:

- School calendar
- Important Dates 24-25 as example
- Non-uniform overview as example
- 26-27 term dates





COMMUNICATION

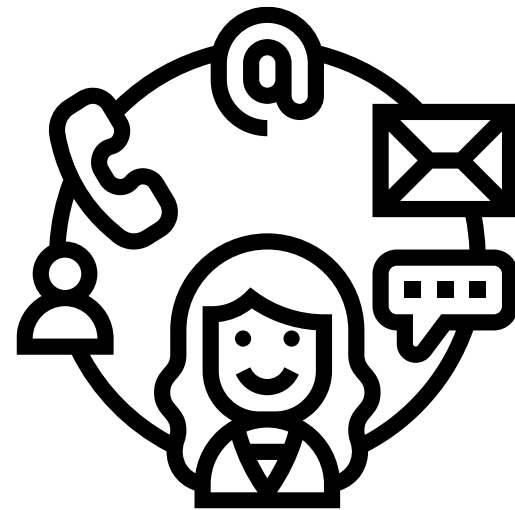


We value your communication and feel that it is important that everyone feels heard and valued within our school community.

Below is an outline of the channels of communication within our school:

Arbor

Arbor is our main platform for direct communication for staff and parents. Arbor messages are checked before school and after school by staff between the hours of 8:30-5:30pm. Mrs Taylor in the office checks Arbor frequently throughout the day. Please use Arbor for non-urgent messages, clubs and parent's evening appointments.



Weekly Drop-in

Beyond the formal parents meeting events noted above, our school has always offered a night during every school week where staff are available to answer any questions you may have or to address any concerns which may have arisen. These sessions are between 3.30-4p.m.
Year 4 drop-in will be on a Thursday.

Main Office

Please call the school office 01782 973810 to pass on urgent time limited messages for example - informing us that your child is absent, booking your child into Kid Zone (due to an emergency). Please be mindful that this is NOT for non-urgent messages that could be passed on by staff at the door.

Reports/ Parents Evenings.

Reports are sent three times a year at the end of every term. Parent's Evenings are then run twice a year at the end of Autumn and Spring half terms in order for staff to inform you of successes and next steps.
Parent's evenings can be booked via Arbor.





DROP OFF/ COLLECTION



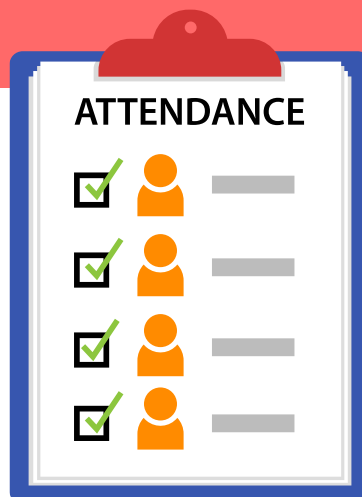
Please drop off your child at 8:45am at the entrance of Kidzone.



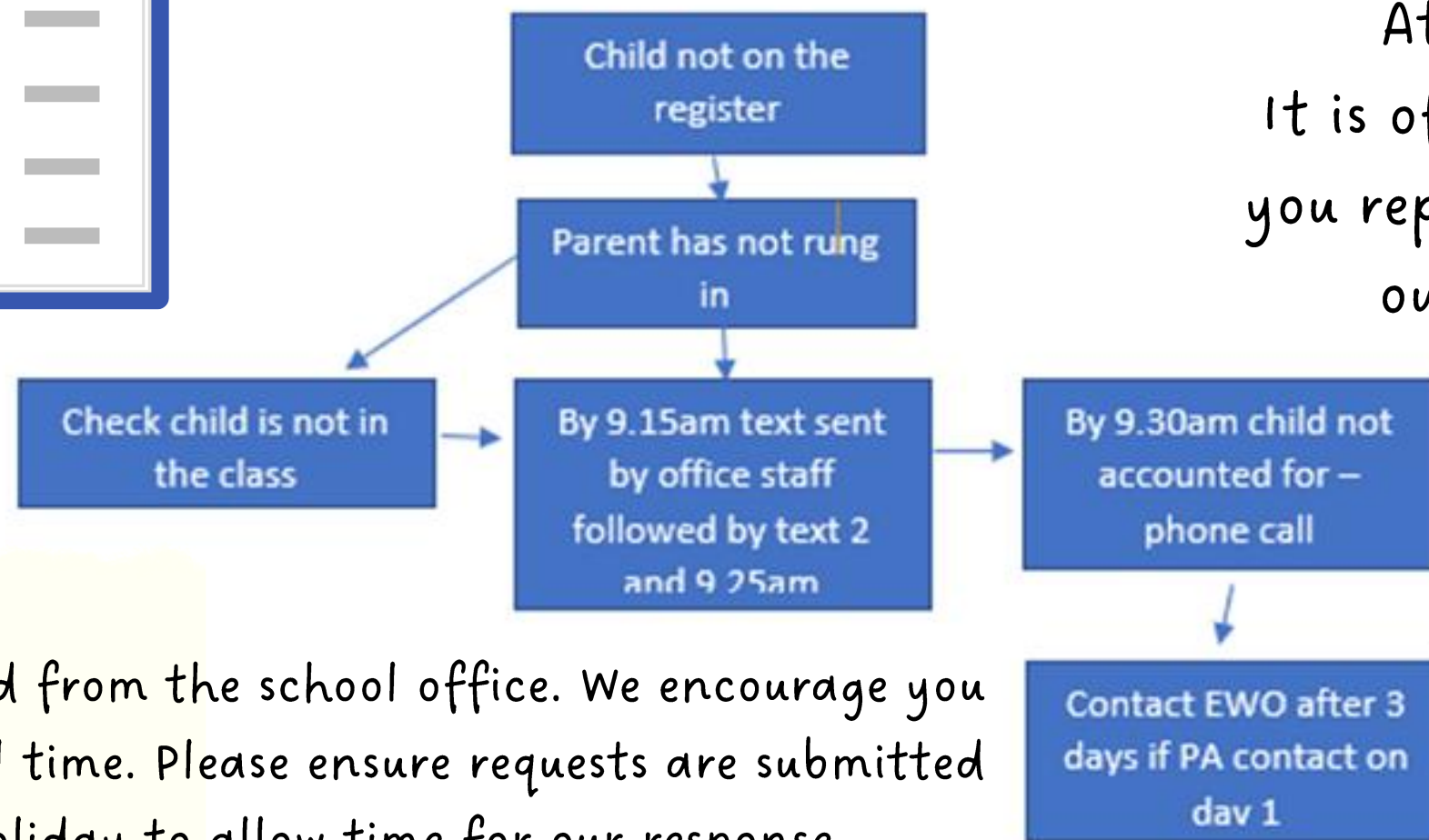
End of day is 3:20pm.
Collect from the swimming pool entrance.

Please do not let your child mess with/open the gate.

ATTENDANCE



Attendance – Graduated Response

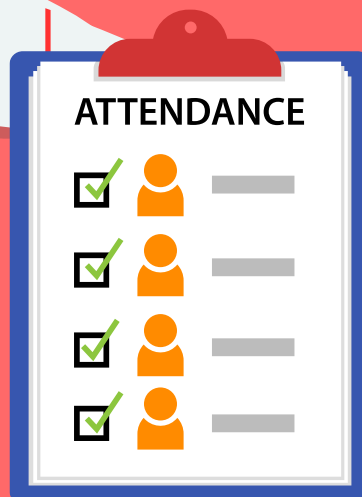


Attendance is tracked daily
It is of the up-most importance that you report absences. This is to support our safeguarding procedures

- ✓ Forming good habits
- ✓ Supports progress
- ✓ Increased wellbeing
- ✓ Supports to build friendships

Holiday request forms can be collected from the school office. We encourage you to avoid taking holidays within school time. Please ensure requests are submitted in plenty of time before your holiday to allow time for our response.

National or Above	96.4-93%	93-90%	Below 90%
Letter 5 (sent when back to above National expectation) Pencils End of term certificate	Register inspection Letter 1 home Class teacher 'we miss you texts' Offer support to improve attendance Phone conversation with parent	Letter 2 sent home Continue to offer support Request medical evidence Offer to administer medicine at school Head to ring parents Class teacher sending 'excited for the week ahead/ well done for a brilliant week' text	Letter 3 sent home Referred to EWO Office to share attendance breakdown with class teachers
Office, Head & Class Teacher	Office & Class Teacher	Office, Head & Class Teacher	Persistent Absence
			Attendance clinic Home visit Referral to Local Authority-fines?
			Office, Head, Class Teacher & EWO
Improving Attendance (at any point within the cycle)			
			Letter 4 sent home (when signs of improving attendance) Postcard for improving attendance
			Head & Class Teacher

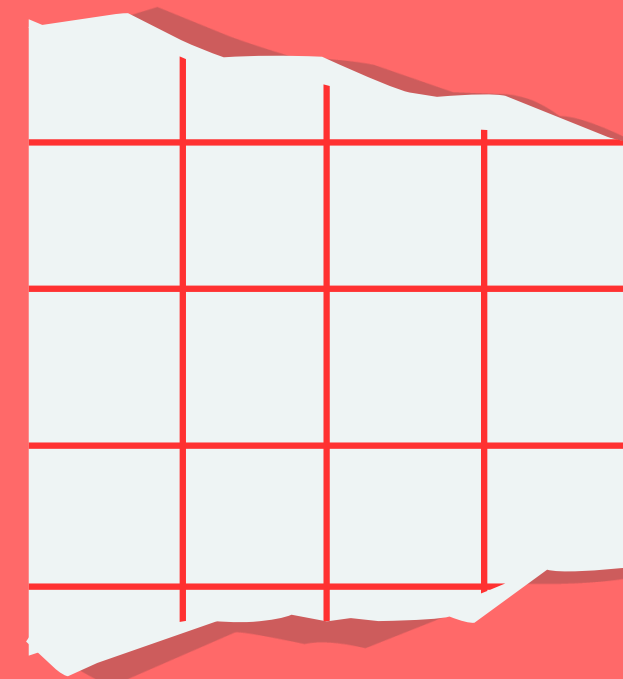


ATTENDANCE SUPPORT



Support for attendance can be given through a range of channels:

- ✓ Class teacher drop-in for support with adjustments to support morning arrival.
- ✓ Attendance clinics - Headteacher/ Attendance Officer/ Classteacher / SEND where required.
- ✓ Please call at any time to arrange a meeting - share briefly your concerns and a member of staff will return your call to offer support and guidance.
- ✓ Early intervention and working together is key to supporting attendance.





ATTENDANCE

WHAT THE NEW RULES MEAN FOR ME

1 I'm a single parent of one child and we want to go on holiday for a week.
 Your holiday will not be authorised and you must talk to the school before you book anything. Because your child will miss 5 school days you will be given a penalty notice fine. The fine is £160 but if you pay it in 21 days it will be reduced to £80.

£160

2 FOR EVERY CHILD A PENALTY IS GIVEN.

+ £160 + £160 + £160 + £160
4 children & 1 parent = £640
 Reduced to £320 if paid in 21 days

IRREGULAR ATTENDANCE

10 IN 10

5

If your child is absent for 10 or more sessions in 10 weeks and their absences are unauthorised. The school will consider prosecution.

1 Day = **2** Sessions

3 FOR A FAMILY OF TWO PARENTS

+ £160 + £160 + £160 + £160
4 children & 2 parents = £1280
 Reduced to £640 if paid in 21 days

If in any period of not more than 3 years, your child has a 2nd and 3rd leave of absence or pattern of irregular attendance...

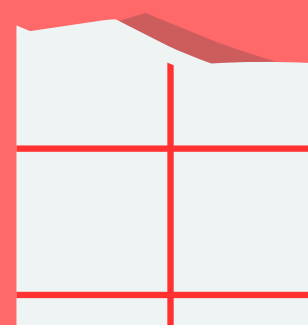
4

<p>2ND TIME</p> <p>2 parents and 1 child = £320 2 children = 640 3 children = 960 4 children = 1280</p> <p>No discount for early payment</p>		<p>3RD TIME</p> <p>A penalty notice fine will not be given. Instead, your case will be taken to court. A magistrate can fine each parent £2500 for each child</p> <p>1 parent & 4 children = £10,000 2 parents & 4 children = £20,000</p>
---	--	---

ATTENDANCE



- ✓ Forming good habits
- ✓ Supports progress
- ✓ Increased wellbeing
- ✓ Supports to build friendships



POSITIVE BEHAVIOUR MANAGEMENT

<https://knypersley.staffs.sch.uk/wp-content/uploads/2025/07/Knypersley-Positive-Behaviour-Policy-25-1.pdf>

Ladder	Explanation
Wow!	To recognise any wow moments – learning/effort/engagement of children in the classroom, supported by House points and class reward
Super Learning	To recognise effort/achievement in a child's learning or attitude to learning, supported with house points
Excellent effort	To praise a child for good contributions/engagement/behaviour in the classroom, supported by house points
Ready to learn	All children to start here each morning. Reflect on children's attitudes to learning and the school rules. <i>The child's peg will be added to the ladder as they are 'ready to learn' in line with the 3B school rules.</i>
Reminder – Make better choices	A reminder will be given to the child to make a better choice and adapt their behaviour to suit the learning environment. Ensure all reasonable adjustments have been made so that they can access learning. Staff to draw attention to the model of behaviour they do want in the classroom (Positive discipline). <i>The child's peg will be removed from the ladder to prevent public reprimanding until they become 'ready to learn' in line with the 3B school rules.</i>
Teachers Choice	The choice is taken away from the child as they cannot make the correct choices, the child will reflect on their behaviour. CT will then discuss their behaviour using the restorative conversations and scripted responses to support these discussions. The child will be allowed another chance to adapt their behaviour and follow the school rules.
Red card	Child will complete a reflection sheet and discuss the incident. These conversations will use the scripted responses. Parents will be informed and the incident will be logged on ARBOR

Our 3B rules are consistent from nursery to Year 4 which supports children in understanding expectations for behaviour.

Each class starts the year by writing their own class 3B expectations which develop over the years as they do themselves.

Our Positive Behaviour Policy is based upon restorative conversations and practice. Ensuring all children use mistakes as a chance to learn and better themselves.

Parents are notified if their child reaches a 'red card'. This will mean that your child has needed multiple reminders and have not been able to follow the 3Bs over a period of time.

If your child reaches 'WOW' this is down to them following the 3B expectations consistently enough to reach a reward. Moving to WOW is not done due to a one off event or learning achievement.

Follow the 3B's

Be Safe

Be Ready

Be Respectful

THANK YOU FOR THE FEEDBACK!



TEAM POINTS REWARDS



**THANK YOU
FOR THE FEEDBACK!**



Staff Feedback was:
“we would like to celebrate children’s individual achievements for house points”....

“We do not feel currently it is fair for all in house points when children try hard with behaviour but their team does not win – it can feel disheartening”

We will be launching individual team point awards.

Bronze: 50 points

Silver: 100 points

Gold: 200 points

The School Council will now carry out class votes for the award the school will earn over a half term.

Children will be rewarded a house point and be then allowed to vote for the reward they would like.

The votes will be brought together in the final week of a half term and the winning whole school reward will be given to ALL.



SWIMMING PROGRESSION

We have brought back swimming certificates that will be awarded when your child is able to confidently complete all skills in the orange boxes. They will be then working towards the blue skills in lessons.

All certificates formats will be found in the 2026-2027 home link books.



**THANK YOU
FOR THE FEEDBACK!**

You said you would like **more information around swimming levels and what your child is able to do and is working towards.** We have worked off this feedback and would like to share the outcomes.

KNYPERSLEY FIRST SCHOOL

Clownfish Congratulations

This is to certify

.....

has been awarded the Clownfish Award

Signed..... Date.....

You can:

- Swivel entry into water without assistance
- Walk forwards 5 metres
- Walk backwards 5 metres
- Move in a horizontal position on front with leg kick action for 2 metres
- Move in a horizontal position on back with leg kick action for 2 metres
- Confidently scoop water on to face
- Front star float 5 seconds
- Back star float 5 seconds

Next steps:

- Be comfortable submerging face in water
- Travel further on front and back without stopping
- Rotate from front to back whilst travelling without touching the floor

KNYPERSLEY FIRST SCHOOL

Shark Congratulations

This is to certify

.....

has been awarded the Shark Award

Signed..... Date.....

You can:

- Swim 1 length on your front in shorts and t-shirt
- Swim 1 length on your back in shorts and t-shirt
- Swim 1 length head first sculling in shorts and t-shirt
- Throw rope 5 metres
- Swim 4 lengths recognised front crawl
- Swim 4 lengths recognised backstroke
- Perform a 3-metre underwater swim
- Hold a star float for 30 seconds
- Answer 4 water safety questions

Next steps:

- Star float without any floatation aids
- Travel further using correct arm and leg action for each stroke
- Extend arms fully during push and glide actions





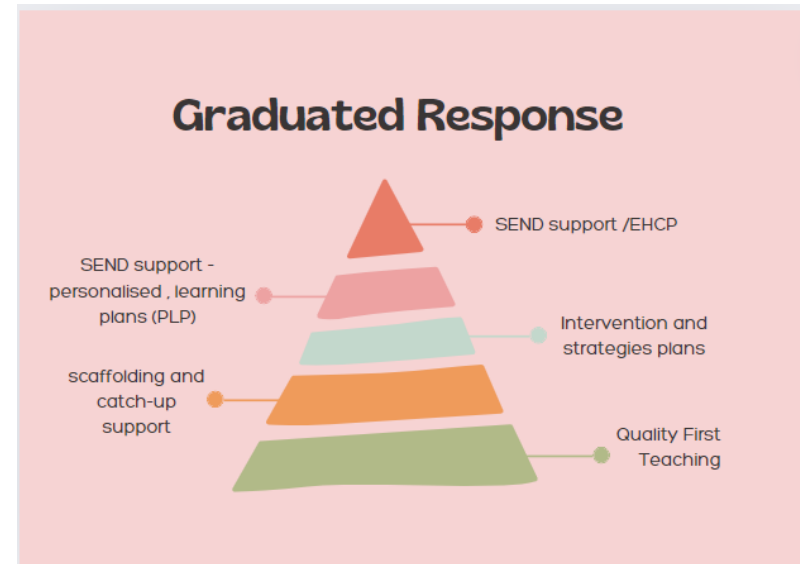
SEND SUPPORT AT KNYPERSLEY FIRST SCHOOL



SENDco – Miss Massey (Busy Bees Class Teacher)

Our weekly SENDco drop-in session is a Wednesday after school. To book an appointment with us please message via Arbor or phone the office to aid appointment times and schedule.

My role at Knypersley First School is to ensure that every child feels included, championed and most importantly - happy. I ensure the best quality support through personalised provision and intervention as well as the organisation of specific support through outside agencies.



Children working below EYFS
Core Offer/Graduated Response

Children working below ARE
Core Offer/Graduated Response

The SEMH Graduated Response has been created in direct alignment with Knypersley First School's [Positive Behaviour Policy 2025](#), reflecting our shared belief that *excellent behaviour and emotional wellbeing go hand in hand*. Together, these documents form a unified and proactive framework to identify emerging needs and provide personalised support at the *right time and in the right way*.

By embedding the principles of our school rules—**Be Safe, Be Respectful, Be Ready**—the Graduated Response expands our commitment to inclusion, emotional literacy and timely intervention. It ensures staff have clarity, consistency, and confidence when responding to Social, Emotional and Mental Health (SEMH) needs.

Children working below ARE
Core Offer/Graduated Response
Reading and Writing

Children working below ARE
Core Offer/Graduated Response
Maths

SOCIAL, EMOTIONAL AND MENTAL HEALTH

BLUE
SAD
TIED

GREEN
HAPPY
OK
CALM

RED
CROSS
ANGRY

YELLOW
EXCITED
WORRIED
SURPRISED

WHAT ZONE ARE YOU IN?

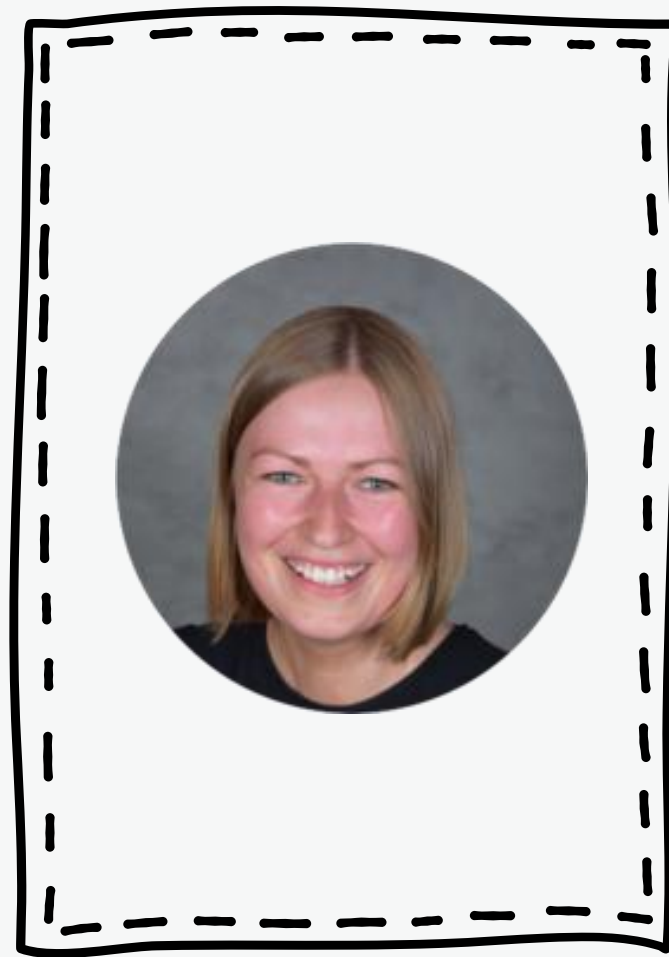
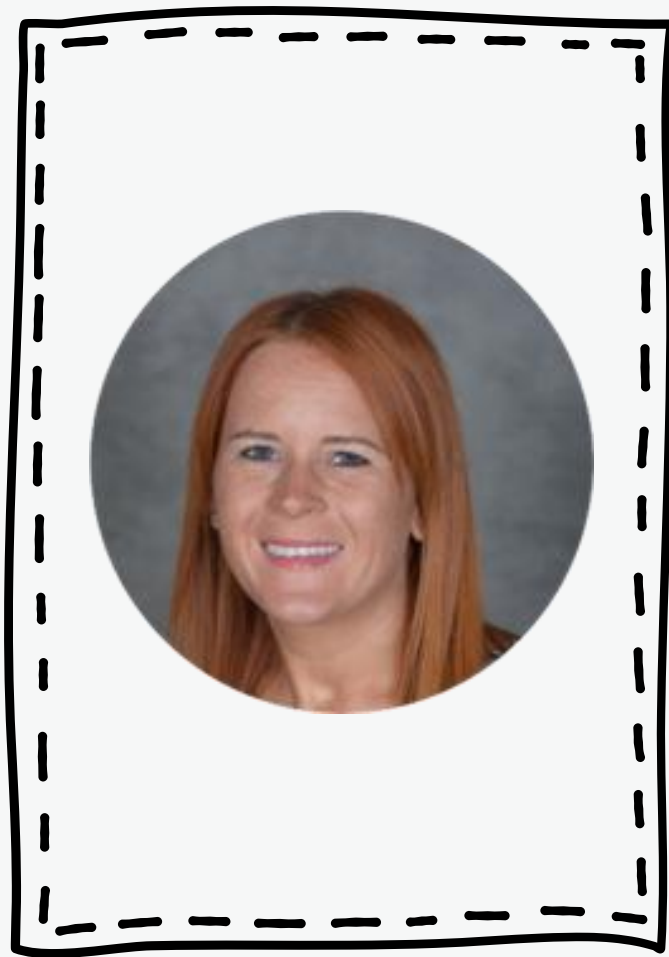
The ZONES of Regulation®

TIME TO TALK STEPS:
BASED UPON PEER MEDIATION STRATEGIES.

- 1 MEET AND AGREE TO WORK THINGS OUT**
- 2 TALK ABOUT WHAT HAS HAPPENED AND GATHER EVERYONE'S VIEWS FOR EACH PERSON INVOLVED**
- 3 FIND A SOLUTION: "WHAT COULD YOU DO NEXT TIME SO THAT THIS PROBLEM DOES NOT HAPPEN AGAIN?"**
ALL CHILDREN MUST HAVE TIME TO SHARE THEIR IDEAS. PASS THE WORRY MONSTER AROUND AND TAKE TURNS TO TALK.
- 4 SUMMARISE WHAT THE PROBLEM WAS: "THE PROBLEM WAS...."**
- 5 REACH AN AGREEMENT: AGREE 1 SOLUTION TOGETHER AND SIGN THE MEDIATION AGREEMENT.**



INTRODUCTION TO THE YEAR 4 TEAM



W E L C O M E



YEAR 4 WEBPAGE/ CURRICULUM OVERVIEWS



Our year group page hosts a wealth of information that staff refer to throughout the year such as:

- Curriculum Overviews – Overview of learning over the year. This is a great way to pre-teach or to engage with learning theme's as your child is immersed within them in school.
- Class Webpages
- Curriculum drivers / Learning for Life overviews.





Children First
Learning Partnership
INSPIRING EXCELLENCE TOGETHER

LEARNING FOR LIFE OFFER YEAR 4

PSHE LEARNING FOR LIFE EXPERIENCES

Year 4

- Complete 'Bounce-back-ability' Workshops with our Mental Health Support Team.
- Take part in a residential and thrill seek safely at Stanley Head.
- Learn to journal.
- Take part in transition activities with the middle schools.
- Anti-Bullying Week
- Children's Mental Health Week
- Picture News
- E-Safety Assemblies
- Assembly Visitors

PE - LEARNING FOR LIFE EXPERIENCES IN... YEAR 4

- Dance teacher to visit
- Tag rugby event
- Transition games
- Forest school
- Sports day
- Stanley head residential

MUSIC- LEARNING FOR LIFE EXPERIENCES IN... Year 4

- Harvest festival
- Visit another school to see their music
- Christmas extravaganza
- Play an instrument to an audience
- Experience a musical production
- Leaver's performance

Design and Technology Year 4 Learning for Life Experiences

- Forage for wild food
- Take part in a food making workshop
- Use torches on an evening nature walk
- Cookery workshops at both Middle Schools
- Take part in the 'egg drop' challenge
- Parent workshop to explore stitching

Learning for Life Vision - Year 4

- Singing assembly
- The Open Center Faith trail
- Harvest performance
- Open the book assemblies
- Hindu traditional food tasting
- Diwali diya lamp

GEOGRAPHY - LEARNING FOR LIFE EXPERIENCES YEAR 4

- CLIMB UP A HUGE HILL
- VISIT A SUPERMARKET TO INVESTIGATE FAIRTRADE FOOD
- INVITE A VISITOR INTO SCHOOL FROM BIDDULPH FAIRTRADE GROUP
- TAKE PART IN THE BIDDULPH FAIRTRADE COMPETITION
- EAT A PICNIC OUTDOORS
- GO ON AN OUTDOOR ADVENTURE TRIP

History - Learning For Life Experiences Year 4

- Create a class museum - to show the difference between primary and secondary sources.
- Visit Chester to learn about Roman Britain.
- Compare Roman architecture to buildings in our local area.
- Place all of our learning in History at Knypersley into chronological order.

SCIENCE LEARNING FOR LIFE YEAR FOUR

"SCIENCE IS ABOUT THE MIRACLE OF THE MUNDANE- AND CHILDREN CAN APPRECIATE THIS BEST. EVERY CHILD IS A SCIENTIST" SUSAN ROSAK

VISIT FROM A LOCAL SCIENTIST TO SPARK OUR ASPIRATIONS.

VISIT TO JAMES BATEMAN TO STRENGTHEN OUR EXPERIMENTING SKILLS AND TO MAKE MEMORABLE MEMORIES.

TAKING PART IN A STATES OF MATTER EXPERIMENT TO ENCOURAGE OUR LOVE AND FASCINATION FOR SCIENCE.



SPREADING THE COST

We will be adding the trips once we have a cost to Parent Pay so that you are able to add payments over the year giving you longer to pay.



**THANK YOU
FOR THE FEEDBACK!**

You said you would like **more awareness as early as possible for trips and events that will require parental funding.** We have worked off this feedback and would like to share the outcomes.



PANTOMIME!

Predicted date: Last day of the Autumn term.

Cost based on 2026 trip (subject to change based on up to date costings): £13



Standon Bowers

Date: February 2027
£187 per child



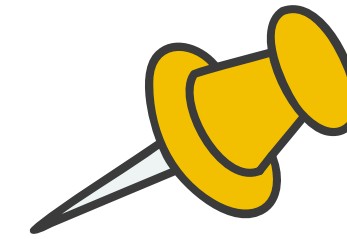
Leavers hoodies

Date: Summer term

Cost based on 2026 trip (subject to change based on up to date costings): £25



READING



Children will be heard read by an adult at least once a week.

There will also be reading in Good Morning Work, sometimes with a reading buddy.

Children will take part in ERIC sessions three times a week, to promote the joy of reading and to teach specific age related reading skills.

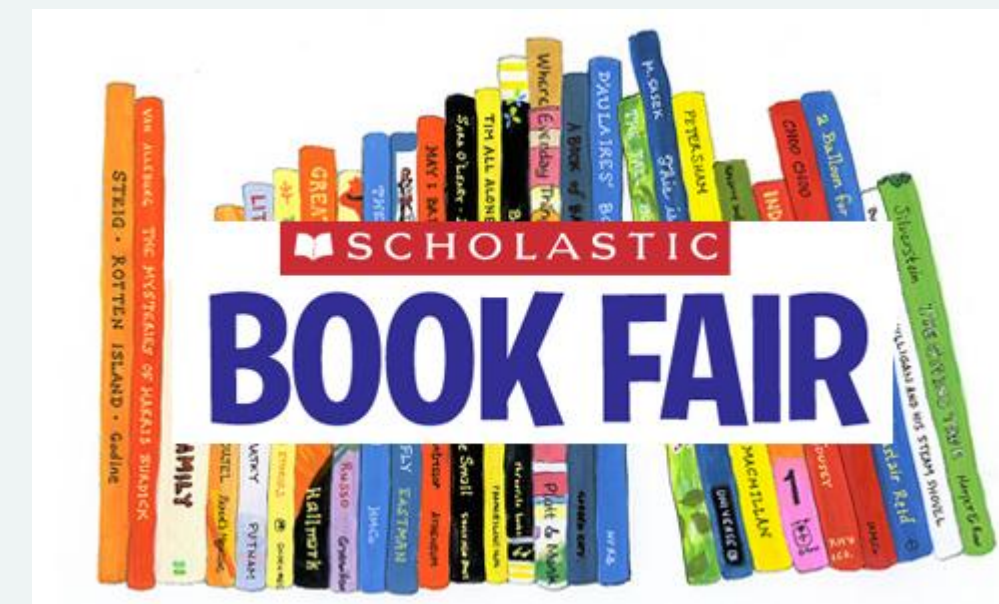
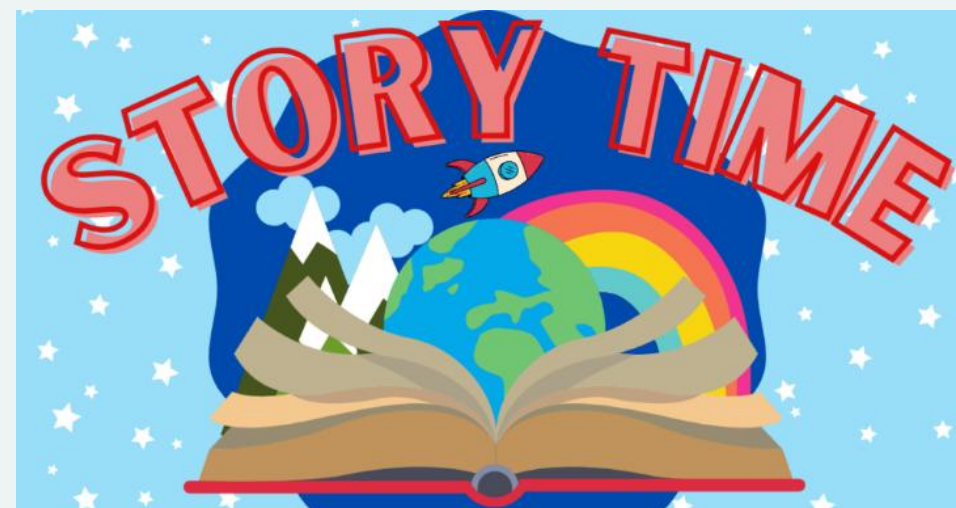
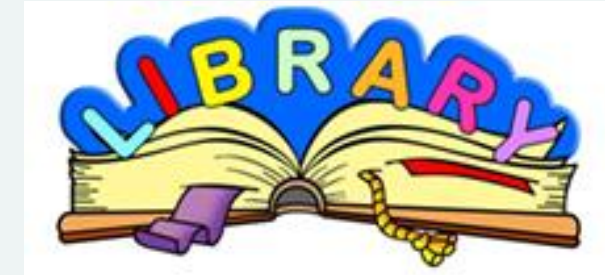
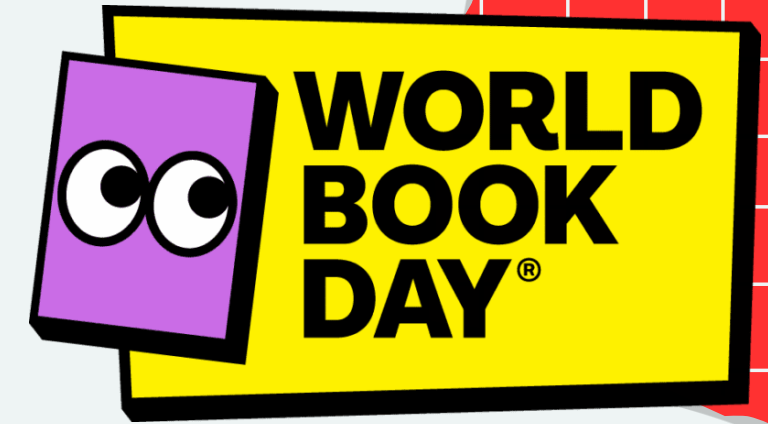
The focus in Year 4 is reading for understanding and inference. Another big focus for this year is written comprehension.

To promote a love of reading, we will visit our school library each week to select a book to share.





LOVE OF READING OFFER





LIBRARY AGREEMENT



Library Agreement



Our weekly library sessions are a wonderful opportunity for children to explore a wide range of fiction, non-fiction and poetry. To help us look after our books and ensure everyone can enjoy them, we ask all families to read and sign the agreement below. **Pupils will not be able to borrow a book until this agreement has been signed.**

- We will ensure that the library books are treated with respect and that we take good care of them. It is important to discuss how to do this with your child.
- We return books that we have borrowed. Reminder letters for outstanding books will be sent at the end of a half term.
- If a book is lost or seriously damaged, we understand that a £5 charge will be incurred. This will be used towards purchasing a replacement copy.

Parent / Carer Name: _____

Parent / Carer Signature: _____

Date: _____

Teacher Signature: _____

This year Mrs Booth has fundraised and been given a significant amount of funding to relaunch our school's love of reading offer.

We have purchased over 200 new books and invested in a new scanning system that our class librarians will lead. Each week during class library sessions the librarian will scan in and out the books and check for damages. Please work with us to protect our enhanced offer by reporting damages and losses ahead of weekly sessions so that we can support replacements.

We hope that this system protects our library offer but also gives our children a sense of responsibility.

Within the Home School Link books Sept 26 we have added a Library Agreement. Please read the agreement and sign so that your child can take part in weekly lending library sessions.

CORE TEXTS



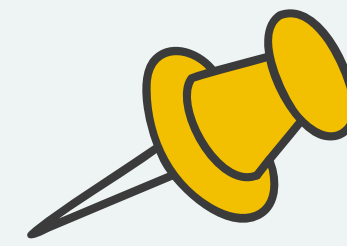
We are currently reviewing our core texts to ensure they offer our children a breadth of knowledge and compassion to support them in the Learning for Life journey.

We are working to review books we use in writing lessons to ensure our children have the best model and example texts. There are new books being released frequently and we want to take time to ensure our offer remains relevant and of the high-quality whilst offering knowledge around the wider world.

We would like to say a huge thank you to everyone who took part in our Read-a-thon in Summer 1. We have used the money raised to purchase new texts and we are excited to share the changes in Autumn following our inset day on Tuesday 1st September.

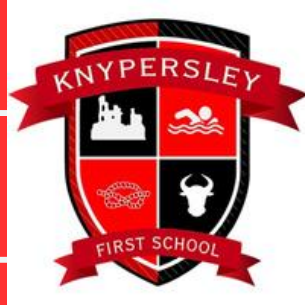


WRITING IN YEAR 4



In Year 4, the main focus of our English lessons will be to write a variety of different sentence types, such as embedded clauses and expanded noun phrases. We will enjoy lots of fabulous stories to inspire our writing and gather lots of high-level language.





HANDWRITING



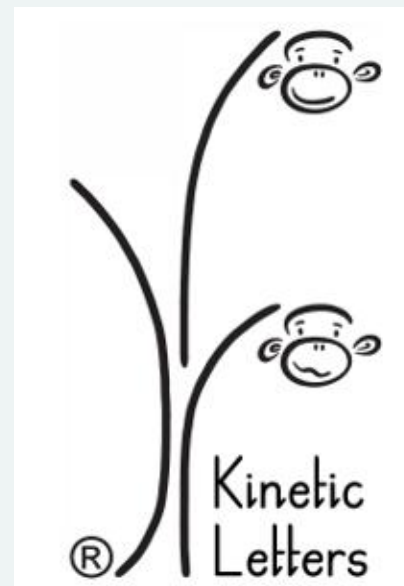
1. Children will be taught to form and write letters correctly, fluently and automatically using the Kinetic Letters handwriting programme.

2. This involves 4 main threads
- Making the body stronger
 - Holding the pencil correctly
 - Learning the letters
 - Flow and fluency

3. Explicit handwriting lessons will be taught to all children.

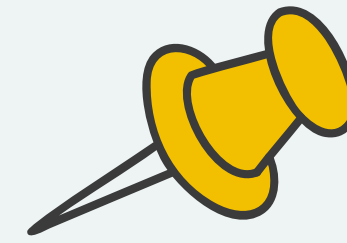
Mrs Booth will run a parent workshop in the Autumn term, please come along to find out more!

Joining in later years once previous skills are secured.





SPELLING



Children receive spelling lessons 3 times a week and focus on year group specific spelling rules.

Spelling of the common exception words is a big focus across the school.

Children will also have a login for The Spelling Shed to use at home, with games that link to their spelling words. We will update these every Friday following in-class assessments.

Spelling Shed 



MATHS



Children First
Learning Partnership
INSPIRING EXCELLENCE TOGETHER

The children are given lots of opportunities to explore new maths learning through discussions with partners and in groups; using equipment to support their understanding.

We encourage the children to represent their working out using concrete resources, pictorially, using abstract methods and then demonstrate their depth of understanding when exploring reasoning and problem-solving challenges.

In year 4, the children are encouraged to know their number facts to 1000.

Autumn term	<p>Number</p> <p>Place value</p> <p>FREE TRIAL</p> <p>VIEW</p>	<p>Number</p> <p>Addition and subtraction</p> <p>VIEW</p>	<p>Measurement</p> <p>Area</p> <p>VIEW</p>	<p>Number</p> <p>Multiplication and division A</p> <p>VIEW</p>	<p>Consolidation</p>		
Spring term	<p>Number</p> <p>Multiplication and division B</p> <p>VIEW</p>	<p>Measurement</p> <p>Length and perimeter</p> <p>VIEW</p>	<p>Number</p> <p>Fractions</p> <p>VIEW</p>	<p>Number</p> <p>Decimals A</p> <p>VIEW</p>			
Summer term	<p>Number</p> <p>Decimals B</p> <p>VIEW</p>	<p>Measurement</p> <p>Money</p> <p>VIEW</p>	<p>Measurement</p> <p>Time</p> <p>VIEW</p>	<p>Consolidation</p>	<p>Geometry</p> <p>Shape</p> <p>VIEW</p>	<p>Statistics</p> <p>VIEW</p>	<p>Geometry</p> <p>Position and direction</p> <p>VIEW</p>



MULTIPLICATION CHECK



Children First
Learning Partnership
INSPIRING EXCELLENCE TOGETHER

At Knypersley, we promote the importance of multiplication through fun games and songs.

In June, all Year 4 children take part in a nationwide multiplication check.

This covers all times tables from 2x table up to the 12x table with an expected 6 second recall.

TT Rockstars, MathsFrame, Hit the button.





METACOGNITION



Children First
Learning Partnership
INSPIRING EXCELLENCE TOGETHER



What helps me to learn best?

What might help you today with your learning?

What resources do we have in our classroom?

Remember you can help yourself to learn!



NEWSLETTER



Children First
Learning Partnership
INSPIRING EXCELLENCE TOGETHER

All important information /
dates will be on the
newsletter.

You will be emailed this
each Friday.

21/06/2024

The 'Knypersley News'
Learning together, learning for life!

A message from Mrs Rourke...

Our school has been a hive of activity this week with a huge range of visitors joining us to tell us about their jobs and career journeys. The children have thoroughly enjoyed hearing about new job roles and their questions have been really thoughtful. Many thanks to everyone who joined us to inspire our children and a special thank you to Mrs Harvey for organising this week I know many emails and telephone calls have been taking place for months prior to this week to make it all happen. For further details about our week please visit our [Facebook page](#).

This week is the Royal Lifesaving Society UK Drowning Prevention Week. Mrs Thwaites our Swimming Instructor has been talking to the children about the water safety code. Please visit the RLS website for further information and activities to share and discuss at home. <https://www.rls.org.uk/pages/category/drowning-prevention-week-campaign>

Our school move up day went extremely well, children settled in quickly and listening into the classrooms I could hear some lovely laughter and chatter. I do hope your children found the day useful and all their questions were answered – please make a note of the information evenings dates which take place early in July to ensure you get a chance to meet your child's new teacher and TA and hear all about the year ahead. It will also provide you with a chance to visit your child's new classroom too!

Next week we are looking forward our Health and Sports week including our Sports Days. Fingers crossed that the weather is kind to us!

Have a great weekend everyone
Mrs Rourke and Team Knypersley

Important dates coming soon..

24/6/24 Health and Sports week. Sports days:

24/6 Year 2 1.30pm

25/6 Nursery 9.30am/Reception 1.30pm

26/6 Year 3 1.30pm

27/6 Year 4 1.30pm

28/6 Year 1 1.30pm

28/6/24 Summer Fair

Open evenings 3.30pm and 6pm

1/7/24 Year 1

2/7/24 Year 2

3/7/24 Year 3

4/7/24 Year 4

5/7/24 Forest School parental engagement 9.30am—all nursery pupils

Class	Attendance
Creative Caterpillars	94.1%
Busy Bees	94%
Class 2	94.4%
Class 3	94.4%
Class 4	95.8%
Class 5	95.7%
Class 6	96.7%
Class 7	94.3%
Class 8	96.8%
Class 9	95.7%

Our whole school attendance target is 95.61%.

This Week's winner is: **Class 8**

Please follow the following link <https://www.knypersley.staffs.sch.uk/lunch-menu/> to find our school lunch menu.

On our return we will be following **week 1** of the new **January-July** menu.

Sports Week

Next week is Sports Week—children will take part in a range of very exciting events all week. Please ensure your child comes into school daily wearing sports kit (this does not have to be their PE kit). A huge thank you to Mrs Nixon for working hard to organise such an exciting week for our children! The PTFA will be selling raffle tickets on the day for £1 a strip this will be drawn at our Summer Fair on Friday.

Please see below for a list of days and times for your child's year group. Please enter your child's sports day via the forest school gates (via the car park). If you require seating for the event please feel free to bring a camp chair. Please be reminded that this event is a participation event where children and adults take part together.

Monday: Year 2 1.30pm

Tuesday: Nursery 9.30am/Reception 1.30pm

Wednesday: Year 3 1.30pm

Thursday: Year 4 1.30pm

<https://www.knypersley.staffs.sch.uk/newsletters/>



HOMWORK



**THANK YOU
FOR THE FEEDBACK!**

A small number of parents said they would like **more home learning tasks over the year.**



- To **read at a home** a minimum of **3 x a week.**
 - Weekly spellings on **Spelling Shed.**
 - Access **TT Rockstars** to develop maths skills.
- Learning for Life challenges –experiences that link to your **2. THE WORLD WE LIVE IN** child's learning focus that you can aid with at home. The tasks will be set via Arbor at the appropriate time of the year *i.e. when learning about Fairtrade we will ask the children to visit a supermarket to explore Fairtrade items.*



FOREST SCHOOL



Children benefit from working in a team and it improves their communication and confidence. It also helps with their problem solving skills.

Forest school sessions will be on a **Friday** with Mr Fox. We will confirm the dates in September.



UNIFORM

DAILY UNIFORM

Red school sweatshirt or cardigan

White polo shirt

Grey or black skirt

Grey/black school trousers

Dark sensible shoes, no trainers

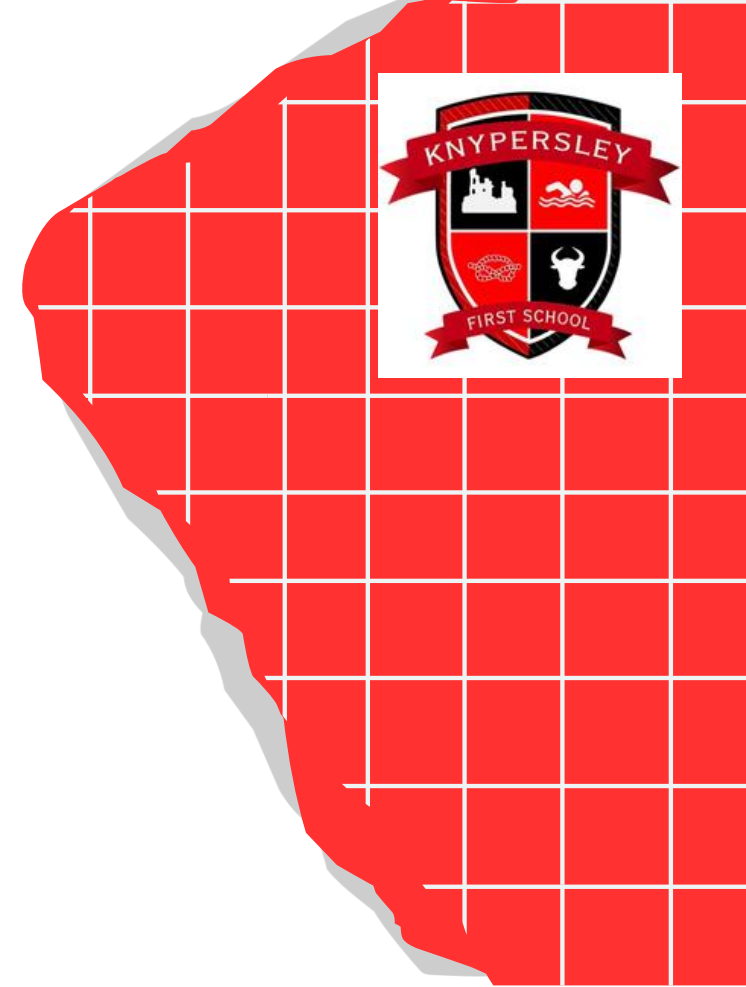
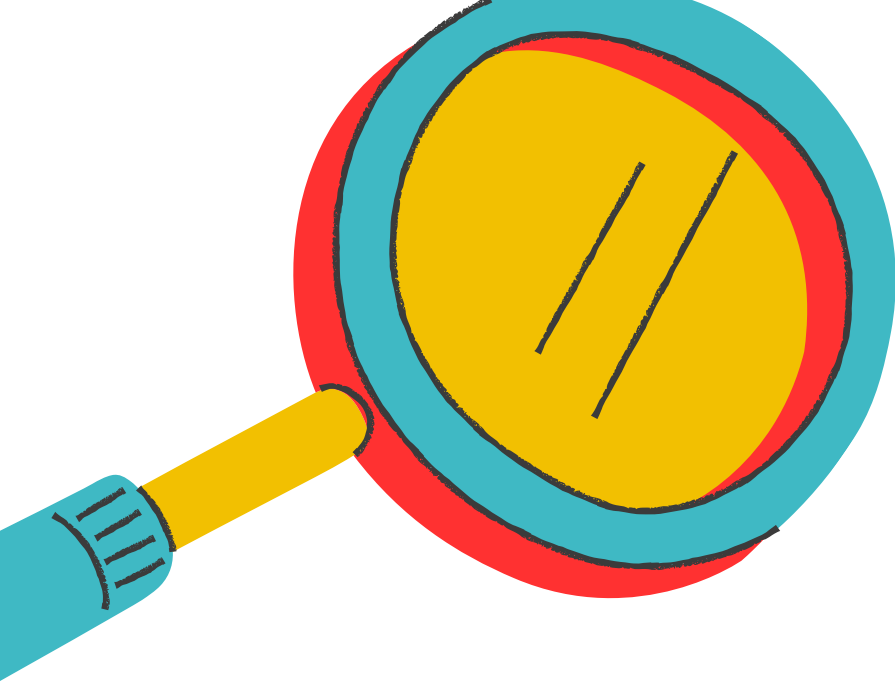
PE DAY

Red School 'T' shirt

Black shorts/ Jogging bottoms/ leggings

Trainers (not pumps)

For Health and Safety reasons no jewellery may be worn for either PE or swimming.
If children do have their ears pierced all earrings must be removed to prevent any injury.



GET INVOLVED!



Our wonderful **PTFA** organise lots of events and raise lots of money for our children—they would welcome new members.



Join our PTFA!

COULD YOU VOLUNTEER TO HELP OUR PTFA?

Our PTFA support our school by raising funds to provide resources and experiences for our children. We would love to welcome you at our next meeting!

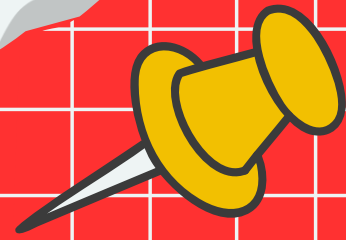
The poster features a bright sun, colorful bunting, and four circular photos of PTFA members. The background is light blue with yellow sun rays and green hills at the bottom.

We always need help at school. Hearing children read, photocopying, laminating, cutting out, going on visits, in the swimming pool.



EXCITING EVENTS

Pantomime!



Forest School

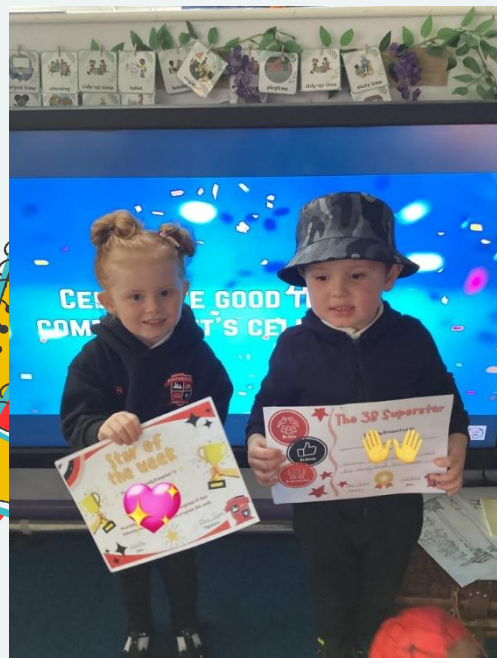
School disco!



Swimming



Celebration Assembly



Roman experience day



Transition Events





AND FINALLY ...



Children First
Learning Partnership
INSPIRING EXCELLENCE TOGETHER

Year 4's **PE** day is on a **Wednesday**. Please wear your PE kit all day.

Year 4's **Swimming** day is on a **Tuesday**. Please wear your school uniform, bring your swimming kit including a swimming hat into school.

Please remove earrings before school on both PE and swimming days.

Year 4's drop in is on a **Thursday** between 3.30 and 4pm.

*Please note these days may change, we will inform you of any changes if applicable.

THANK YOU!

Do you have any questions for
me before we go?

