

22/11/2024



The 'Knypersley News'

Learning together, learning for life!



A message from Miss Leese...

Dear Parents and Carers,

Firstly I would like to thank the wonderful PTFA team who, as part of the Christmas Market preparations, have spent the majority of the week busily baking in our cookery room alongside all of our pupils.

Today some of our elected representatives took part in the first Children First Learning Partnership Pupil Forum Meeting. 4 of our pupils joined representatives from Springhead, Castlechurch and Reginald Mitchell Primary schools and Oxhey and Kingsfield First Schools. They led a presentation sharing why Knypersley is a special place to learn and work and are looking forward to sharing the information they received about the other schools which make up the Children First Learning Partnership family with the rest of their classmates. There are many plans to gather their opinions and ideas to refine our child friends safeguarding procedures poster and to share their thoughts about clubs within their schools.

Thank you to everyone who attended our SEND coffee morning. We were joined by Kate Oliver the area SENDCo who shared many useful pieces of advice and support for our families. Please keep an eye out on newsletters and our Facebook page for more SEND Coffee Mornings to come.

Team Winter/ Christmas are working hard behind to scenes to ensure events planned are communicated in plenty of notice to support your planning over the up and coming weeks. Please see the spotlight page this week for an overview of dates/ events, all dates have been taken from our school website calendar.

Please ensure you check out our recorded school News Rounds on our Facebook page for more information regarding our week in the spotlight.

Wrap up warm and have a lovely weekend,

Miss Leese and Team Knypersley xx

Important dates coming soon...

22/11/2024

Christmas Markets

WB 25/11/2024

Faith in Focus Week

29/11/2024 Fay's Dance Show—3:55pm

2/12/2024—PTFA Hamper non-uniform

EYFS - Chocolates

KS1- Sweets

Ks2 - Bottles

6/12/24

Year 4 Forest School engagement **Class 8—**

9.30am / Class 9— 1.30pm

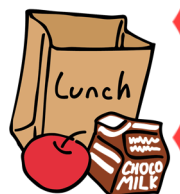
All above dates are taken directly from our school calendar. If you would like to see events past the dates listed above

Class	Attendance
Creative Caterpillars	94.3%
Busy Bees	92.6%
Class 2	95.1%
Class 3	94.7%
Class 4	95.5%
Class 5	95.2%
Class 6	97.4%
Class 7	96.6%
Class 8	97.9%
Class 9	92.9%



This Week's winner is:

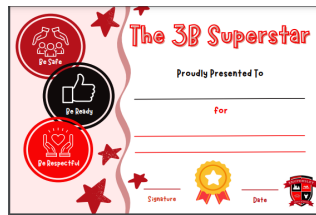
Our whole school attendance target is 96.5%
This week, our school attendance was: 95.3%



Please follow the following link <https://www.knypersley.staffs.sch.uk/lunch-menu/> to find our school lunch menu.

On our return we will be following **week 1** of the new **Sept-Feb** menu.

Rewards and Celebrations



Class 2- Finley

Class 3- Henry

Class 4- Alfie

Class 5- Cleo

Class 6- Logan W

Class 7- Esra

Class 8- Cody

Class 9- Phoebe

Nursery- Sienna

Creative Caterpillars- Nola

Busy Bees- Hugo

Class 2- Marnie

Class 3- Daisy

Class 4- George

Class 5- Joey

Class 6- Betsy

Class 7- Amelia G

Class 8- Albert

Class 9- Freddie P

Nursery- Lottie

Creative Caterpillars- Willow

Busy Bees- Toby

Class 2- Isabelle

Class 3- James

Class 4- Seb

Class 5- Lily-Rae

Class 6- Oscar

Class 7- Amber

Class 8- Henry

Class 9- Harry



House Points



Achievements Outside of School...



PIC-COLLAGE



Knypersley in the Spotlight...

Admission open for 2025

Reception and Year 4 Middle School Places



The application process for a reception or junior/middle school place for September 2025 will open on 01 November 2024.

The closing date is 15 January 2025.

#WakeUpWednesday

#WakeUpWednesday aims to equip every trusted adult with the knowledge and skills they need to keep up with the latest information, implement best practice and heighten their awareness of issues around three core topics; online safety, mental health & wellbeing; and climate change & sustainability.

Relevant to all parents and educators, from early years through to secondary school, our #WakeUpWednesday resources can be accessed both on desktop and via our #WakeUpWednesday app, providing instant and easy access to world-class expertise in the areas they need the most anytime, anywhere.

<https://nationalcollege.com/webinars/an-introduction-to-streaming>

This week I would like to direct your attention to an introduction to streaming

The Big Hearty Quiz

We have had to reschedule our Big Hearty Quiz and will be confirming the new 2025 date very soon!

Faith in Focus Week

Next week the children will be taking part in Faith In Focus week. The aim of the week is to ensure that our children give the knowledge they need to become even more tolerant and respectful to a range of religions past that of their own beliefs.

As part of the week we will be visiting St John's Church and The Life Stream Church. To thank both for allowing us to visit and as a sign of support/ respect, we will be accepting cash donations over the week that will then be delivered by our School Council and Miss Massey by the end of the week.

A huge thank you in advance.



Thank you!

A huge thank you for your brilliant attendance this week despite the weather. Many classes enjoyed exploring the snow with their friends and teachers. It was a pleasure hearing and seeing their faces and their laughter throughout the day.



PARENT WORKSHOP

- Hosted by our Mental Health Support Team
- Tuesday 10th December at 9:15am
- Focusing on Behaviour and Positive Parenting
- Raise happy, confident children
- Manage misbehaviour so everyone in the family enjoys life more
- Set rules and routines that everyone respects and follows
- Encourage behaviour you like
- Take care of yourself as a parent
- Feel confident you're doing the right thing

All welcome!

Ring the school office to book your place - 01782 973810

Refreshments provided



Winter/Christmas Events

Up-coming Events

2nd December PTFA non-uniform:

- EYFS - Donations of chocolates
- Key stage One - Donations of Sweets
- Key Stage Two- Donations of bottles

9th December: Nativity Performance Week (see school calendar)

16th December: We Heart Winter/ Xmas Jumper Day

17th Dec - Big Hearty Family Sing-a-Long 9:30am

18th Dec - Big Hearty Grandparent Sing-a-long 9:30am/ 2pm

18th December: Xmas Dinner Day - see message on Arbor to complete your child's order.

19th December: EYFS Magician Visit/ Whole School Party Day
(non-uniform - £1 donation on the day)



20th December: Year 1 - Year 4 Panto Trip/ School closes



20th December - PTFA/ Big Hearty Christmas sing-a-long
(Top playground from 3pm - 3:45pm) hot drinks for sale.



How can we help?

Caudwell Children are offering a FREE Workshop for parents and carers.

Would you like to know about the services they offer?

**Autism Services Equipment Family Support Sensory Packs
Shaping Futures Short Breaks Therapy Treatment**

We've teamed up with Caudwell Children to help you and your family through this journey.

**When: Wednesday 27th November
10am - 12noon**

Booking Essential

Please call 01782 297970 to book your place

**Where: Staffordshire Moorlands Family Hub, Albert Street,
Biddulph, Staffordshire, ST8 6DT**

Caudwell Children exists to make life fair for disabled and autistic children.

Exciting Events!

AT KNYPERSLEY FIRST SCHOOL



Early bird discount for
Knypersley
First School

10% OFF

All products for 2 WEEKS ONLY!

Use code: **KnypersleyX24** during checkout

One use only. Excludes VAT and P&P. Valid for 2 weeks from the portal opening date - not the date that you see this promotion. Not automatically applied and cannot be added once an order has been confirmed.



Working with

Knypersley First School

Your child has uploaded a
Christmas drawing to our website!

VIEW NOW

by logging into the parent order portal at
www.mychidsart.co.uk/order



Order portals
open NOW until the
31st December

EARLY BIRD DISCOUNT FOR 2 WEEKS ONLY

Use code **KnypersleyX24**

during checkout for 10% off your order!

One use only. Excludes VAT and P&P. Valid for 2 weeks from the portal opening date - not the date that you receive this leaflet. Not automatically applied and cannot be added once an order has been confirmed.

Username

Access Code

NB: Username and Access Code are case and space sensitive, so please be careful when entering the details into the portal.



Scan me



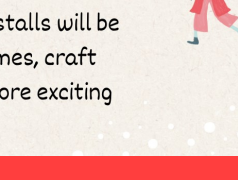
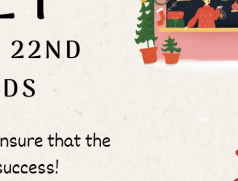
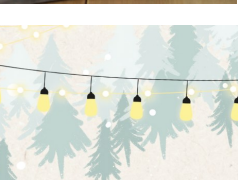
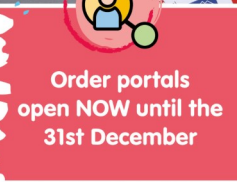
Designed at
Knypersley First School

Order personalised Christmas
cards as well as unique gifts
and keepsakes printed with your
child's Christmas design!

Knypersley First School will receive 20% commission on all product sales!

To order, login to the
parent order portal at
www.mychidsart.co.uk/order
Login details for the portal will
be issued via leaflet.

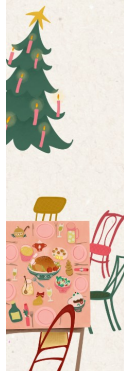
01530 887650 customerservice@mychidsart.co.uk
www.mychidsart.co.uk/order



JOIN US FOR A CHRISTMAS MARKET

FRIDAY NOVEMBER 22ND
3:30PM ONWARDS

The PTFA have been working hard to ensure that the
Christmas Markets are a huge success!
They would like to share a selection of the stalls that will be
participating on the day...



This year there will be 9
independent stalls a few new faces
and returning ones to!

Alongside the market stalls will be
a wide variety of games, craft
activities and many more exciting
events!

Stalls will be priced
at 50p, £1 or £1.50.

Where possible
please support staff
by having the correct
change available for
payment. There will
also be contactless
payment codes
available too!

Knypersley's Autumn Bookshelf!



Nursery



Reception



Year 1



Year 2



Year 3



Year 4